

FACILITIES

- | | | | |
|--------------------|---------------------------|--------------------------|-------------------------------|
| 1 Arrival Plaza | 9 Garden Lounge | 17 Children's Playground | A Guard House |
| 2 Main Lobby (B2) | 10 Terrace Garden | 18 BBQ Pavilion | B Bin Centre |
| 3 Concierge (B2) | 11 Silhouette Garden | 19 50m Lap Pool | C Genset (Above Bin Centre) |
| 4 Juniper Garden | 12 Function Room | 20 Water Feature | D Domestic Water Bulk Meter |
| 5 Juniper Trail | 13 Management Office (B1) | 21 Juniper Nest | E Electrical Sub-station (B2) |
| 6 Spa Sanctuary | 14 Gymnasium | 22 Tennis Court | F Pedestrian Gate |
| 7 Aqua Massage Bed | 15 Pool Deck | | G Ventilation Shaft |
| 8 Spruce Jacuzzi | 16 Children's Pool | | |

12TH STOREY

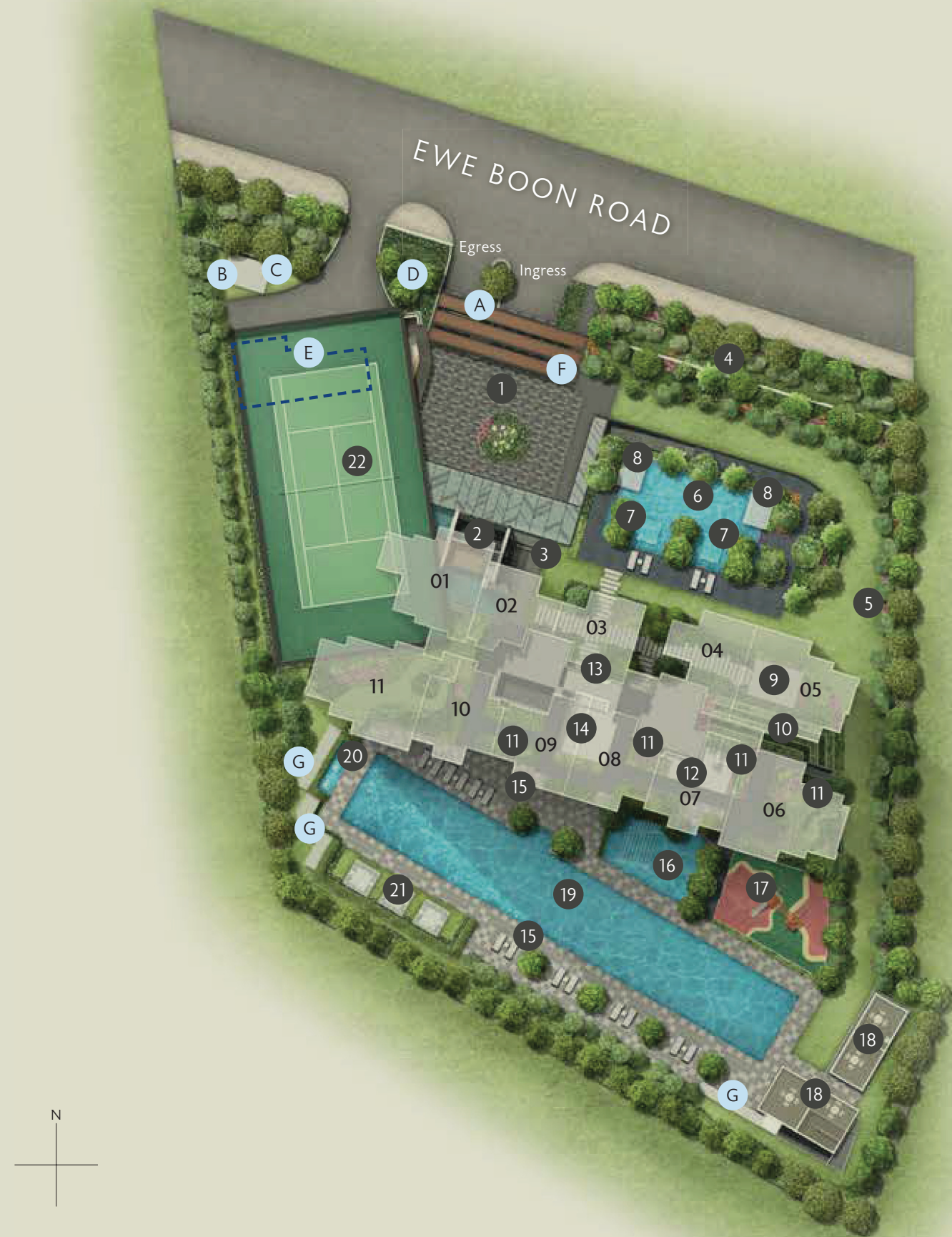
- 23 Sky Lounge

ROOF

- | | |
|--------------------|----------------|
| 24 Stargazing Deck | 27 Sky Fitness |
| 25 Herb Garden | 28 Dining Deck |
| 26 Yoga Deck | Water Tank |
| | Hose Reel Tank |

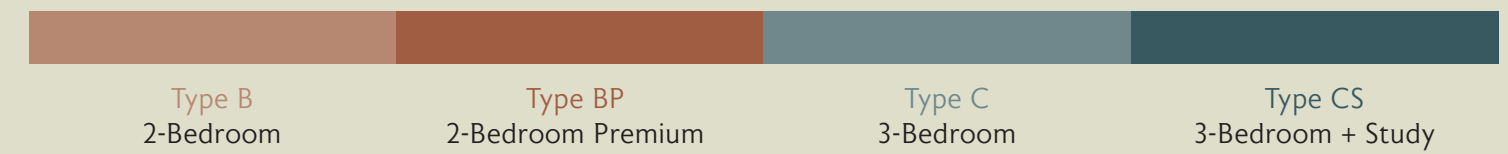


Artist's Impression

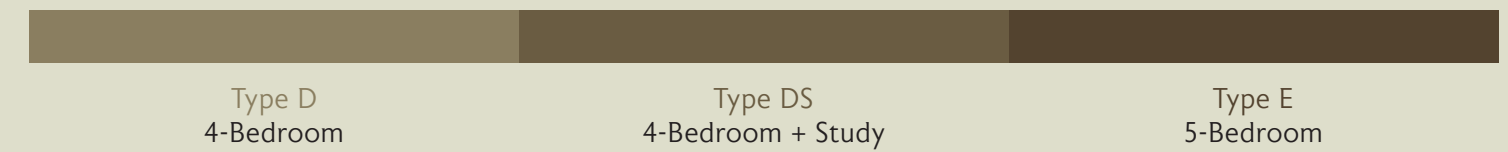


Artist's Impression

UNIT DISTRIBUTION



THE SIGNATURE SERIES

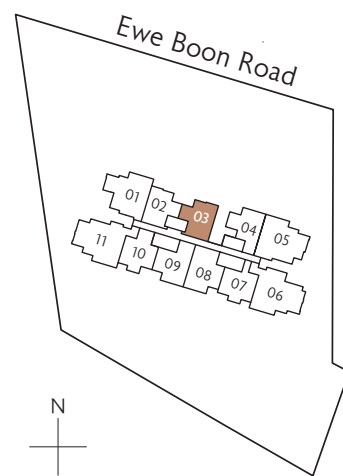
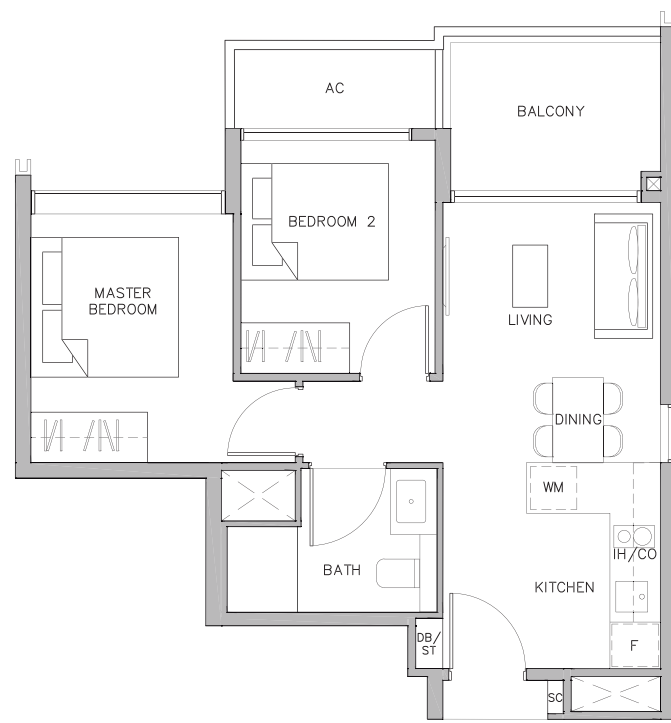


UNIT	01	02	03	04	05	06	07	08	09	10	11
FLOOR 12	D2 #12-01		SKY LOUNGE	D3S #12-03		E1 #12-06		D1 #12-08		E2 #12-10	
11	C1	B1a	B1b	B2	C3S	C4S	B3	B6P	B5P	B4P	C5S
10	C1	B1a	B1b	B2	C3S	C4S	B3	B6P	B5P	B4P	C5S
09	C1	B1a	B1b	B2	C3S	C4S	B3	B6P	B5P	B4P	C5S
08	C1	B1a	B1b	B2	C3S	C4S	B3	B6P	B5P	B4P	C5S
07	C1	B1a	B1b	B2	C2	C4S	B3	B6P	B5P	B4P	C5S
06	C1	B1a	B1b	B2	C2	C4S	B3	B6P	B5P	B4P	C5S
05	C1	B1a	B1b	B2	C2	C4S	B3	B6P	B5P	B4P	C5S
04	C1	B1a	B1b	B2	C2	C4S	B3	B6P	B5P	B4P	C5S
03	C1	B1a	B1b	B2	C2	C4S	B3	B6P	B5P	B4P	C5S
02	C1	B1a	B1b	B2	C2	C4S	B3	B6P	B5P	B4P	C5S

2-BEDROOM

TYPE B1b

54 sq m / 581 sq ft
#02-03 to #11-03



Key plan is not drawn to scale



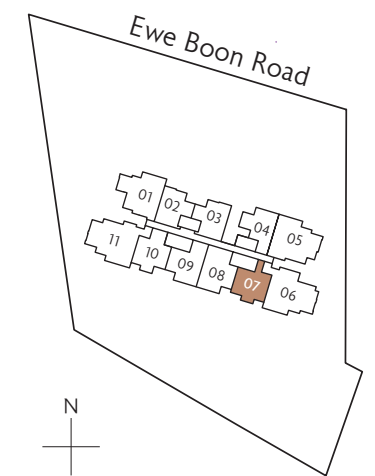
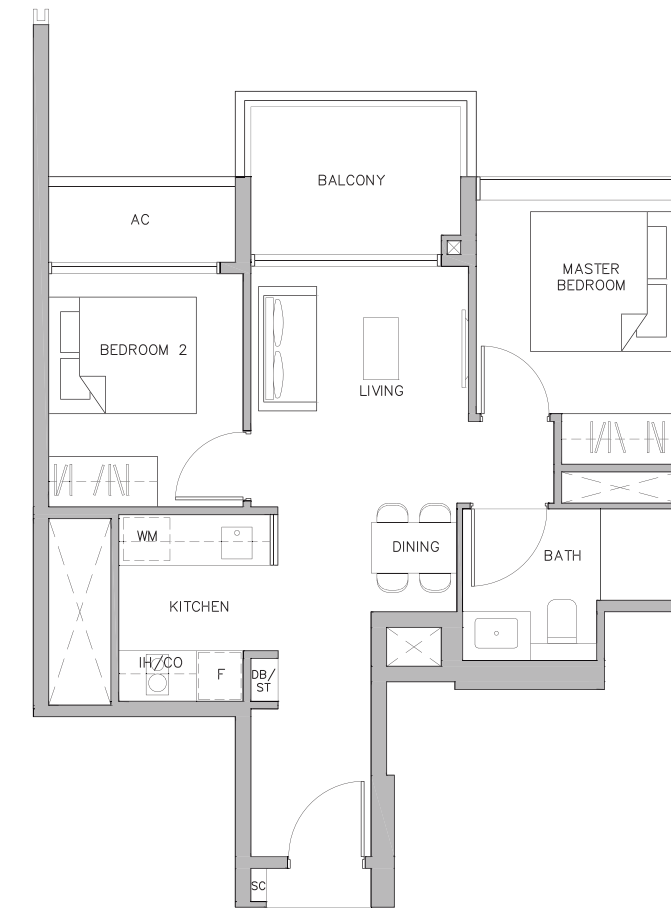
- | | | | |
|----|-------------------|----|--------------------|
| F | Fridge | SC | Shoe Cabinet |
| CO | Conventional Oven | DB | Distribution Board |
| IH | Induction Hob | ST | Storage |
| WM | Washer cum Dryer | | |

Area includes air-con (A/C) ledge. Private enclosed space (PES), balcony and strata void area where applicable. Some units are mirror images of the apartment plans shown in the brochure. Please refer to the key plan for orientation. The plans are subject to change as may be approved by relevant authorities. All floor plans are approximate measurements only and are subject to government re-survey. The balcony shall not be enclosed unless with the approved balcony screen.

2-BEDROOM

TYPE B3

58 sq m / 624 sq ft
#02-07 to #11-07



Key plan is not drawn to scale



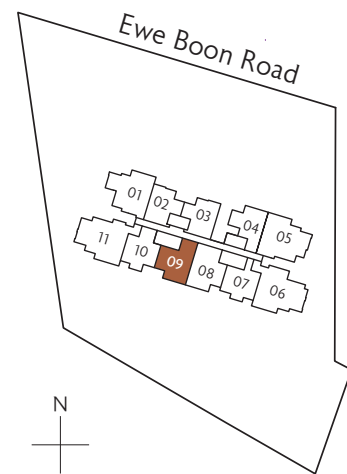
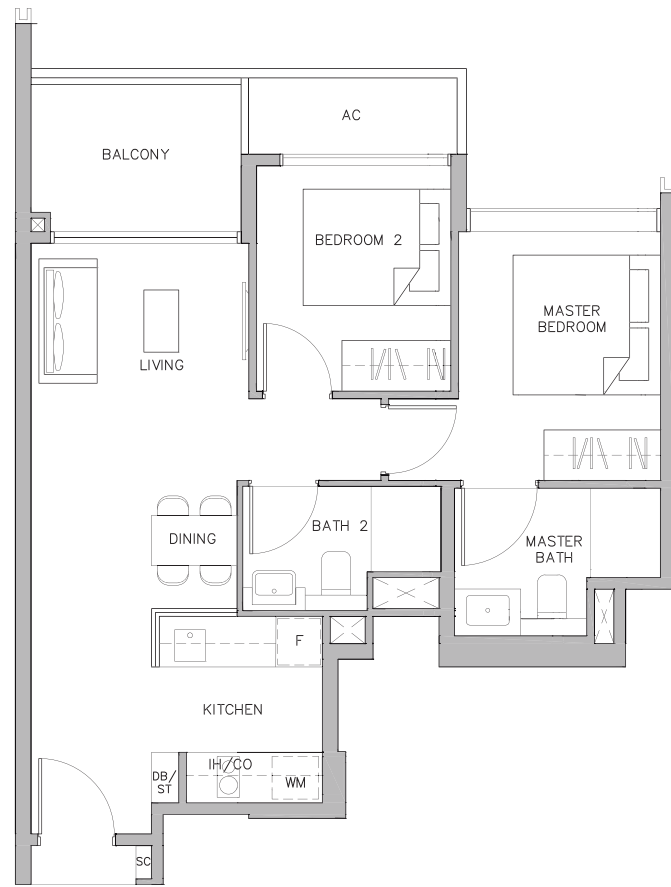
- | | | | |
|----|-------------------|----|--------------------|
| F | Fridge | SC | Shoe Cabinet |
| CO | Conventional Oven | DB | Distribution Board |
| IH | Induction Hob | ST | Storage |
| WM | Washer cum Dryer | | |

Area includes air-con (A/C) ledge. Private enclosed space (PES), balcony and strata void area where applicable. Some units are mirror images of the apartment plans shown in the brochure. Please refer to the key plan for orientation. The plans are subject to change as may be approved by relevant authorities. All floor plans are approximate measurements only and are subject to government re-survey. The balcony shall not be enclosed unless with the approved balcony screen.

2-BEDROOM PREMIUM

TYPE B5P

65 sq m / 700 sq ft
#02-09 to #11-09



Key plan is not drawn to scale

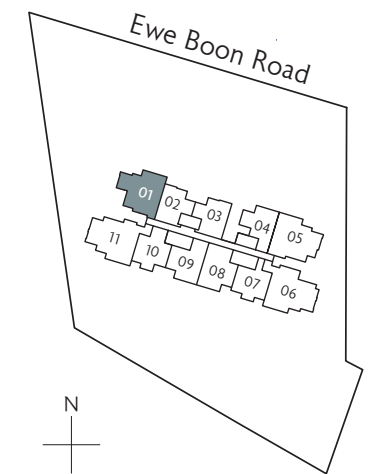
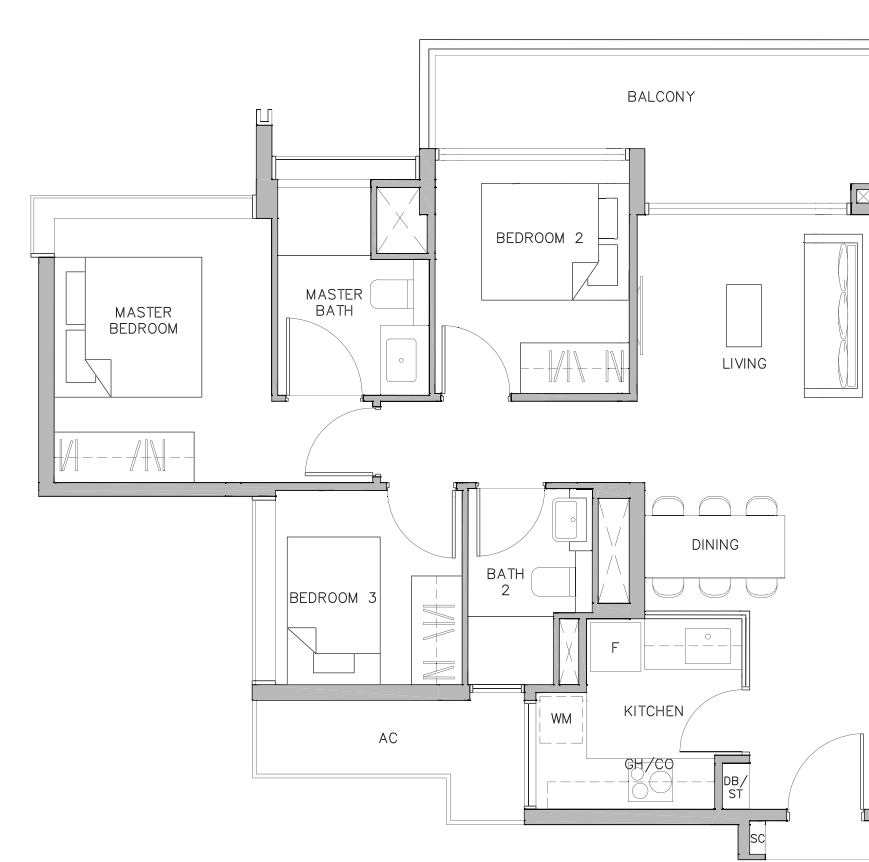


- | | | | |
|----|-------------------|----|--------------------|
| F | Fridge | SC | Shoe Cabinet |
| CO | Conventional Oven | DB | Distribution Board |
| IH | Induction Hob | ST | Storage |
| WM | Washer cum Dryer | | |

3-BEDROOM

TYPE C1

85 sq m / 915 sq ft
#02-01 to #11-01



Key plan is not drawn to scale



- | | | | |
|----|-------------------|----|--------------------|
| F | Fridge | SC | Shoe Cabinet |
| CO | Conventional Oven | DB | Distribution Board |
| GH | Gas Hob | ST | Storage |
| WM | Washer cum Dryer | | |

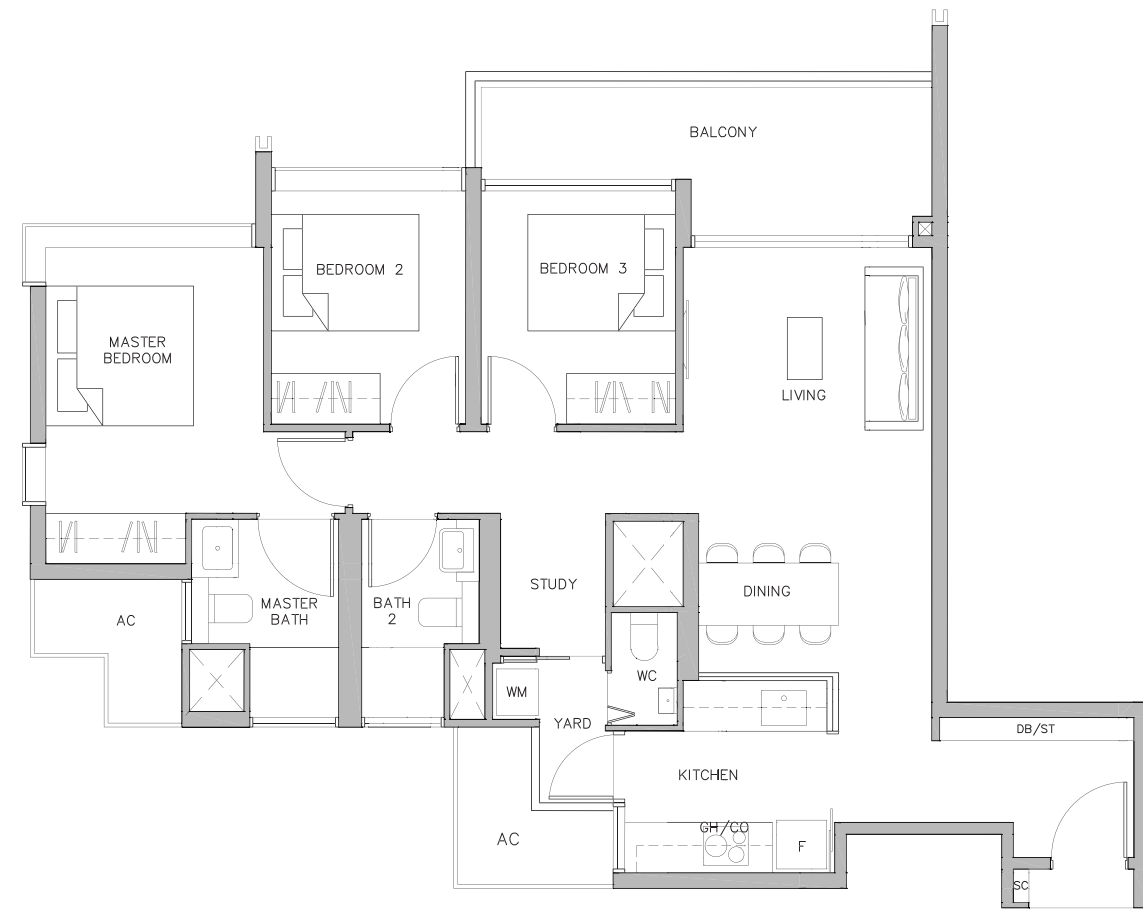
Area includes air-con (A/C) ledge. Private enclosed space (PES), balcony and strata void area where applicable. Some units are mirror images of the apartment plans shown in the brochure. Please refer to the key plan for orientation. The plans are subject to change as may be approved by relevant authorities. All floor plans are approximate measurements only and are subject to government re-survey. The balcony shall not be enclosed unless with the approved balcony screen.

Area includes air-con (A/C) ledge. Private enclosed space (PES), balcony and strata void area where applicable. Some units are mirror images of the apartment plans shown in the brochure. Please refer to the key plan for orientation. The plans are subject to change as may be approved by relevant authorities. All floor plans are approximate measurements only and are subject to government re-survey. The balcony shall not be enclosed unless with the approved balcony screen.

3-BEDROOM + STUDY

TYPE C4S

103 sq m / 1109 sq ft
#02-06 to #11-06



Key plan is not drawn to scale



- | | | | |
|----|-------------------|----|--------------------|
| F | Fridge | SC | Shoe Cabinet |
| CO | Conventional Oven | DB | Distribution Board |
| GH | Gas Hob | ST | Storage |
| WM | Washer cum Dryer | | |

Area includes air-con (A/C) ledge. Private enclosed space (PES), balcony and strata void area where applicable. Some units are mirror images of the apartment plans shown in the brochure. Please refer to the key plan for orientation. The plans are subject to change as may be approved by relevant authorities. All floor plans are approximate measurements only and are subject to government re-survey. The balcony shall not be enclosed unless with the approved balcony screen.

PREMIUM FITTINGS



For illustration purposes only



For illustration purposes only

Sanitary Fittings

Kitchen Appliances

